

Quick start - The Main Points

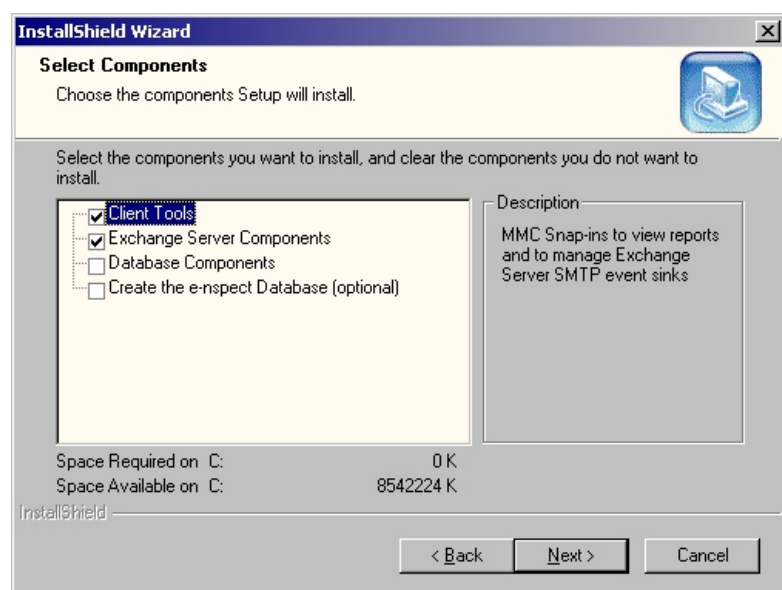
This document aims to provide you with the necessary understanding of the e-nspect architecture, which will enable you to make informed decisions during installation.

This section covers the main points which should be remembered.

e-nspect2000 requires the use of a Microsoft Database server, either MS SQL2000 or MS SQL7. If you do not have an MS SQL server to use do not worry. e-nspect provide the free desktop version of MS SQL2000 (Sp3) server in a setup program called e-nspectDB. You can download this from the e-nspect web site. If you do use the e-nspect database setup program please remember that it sets the database administrator account (sa) password to e-nspect. You can of course change this at a later stage.

The e-nspect2000 setup program may need to be run on more than one host, depending upon where you are going to install things.

The e-nspect setup program enables you to select a variety of components during installation. The components you should select depend upon which machine (the exchange server, the SQL server, the admin workstation) you are running setup on.



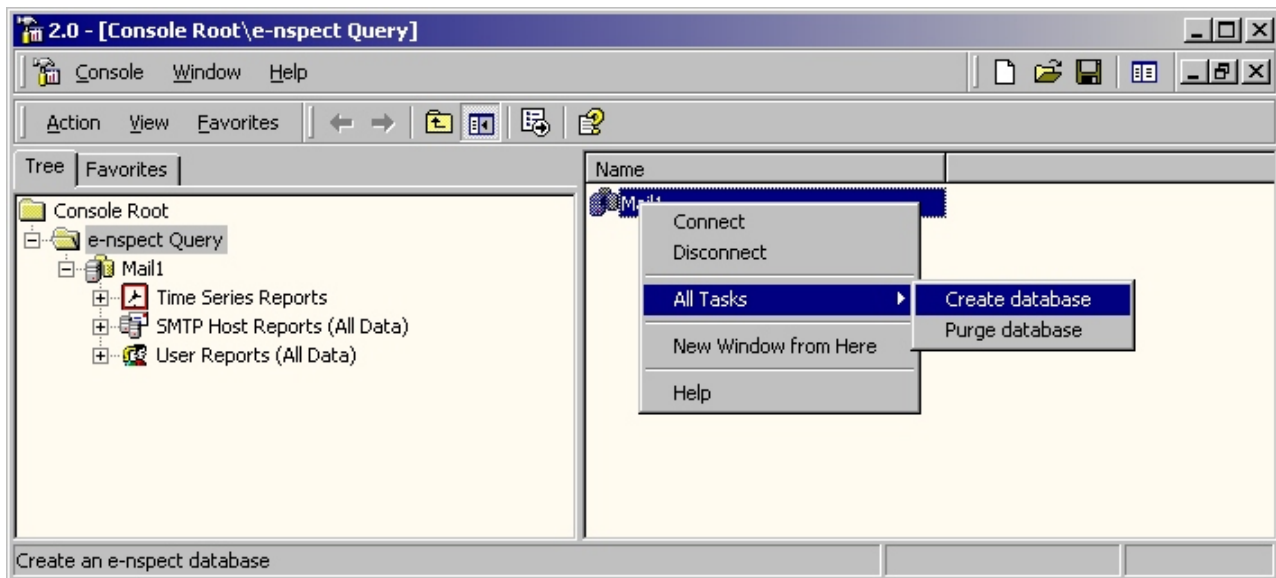
The CLIENT TOOLS are used to view e-nspect2000 reports and to undertake configuration tasks. You can choose to install the Client tools on any computer that can communicate with the Exchange Server SMTP host and the database server.

The EXCHANGE SERVER COMPONENTS are REQUIRED for e-nspect2000 to work and need to be installed on the Exchange Server SMTP host. This requires the setup program to be run on the Exchange Server SMTP host.

The DATABASE COMPONENTS are REQUIRED and need to be installed on the database server. The database server must be fully operation and it is advised that the e-nspect database has previously been created. If you install the DATABASE COMPONENTS before the e-nspect database has been created many errors will be logged to the application log. These will stop as soon as the e-nspect database has been created.

CREATE THE e-nspect DATABASE is an optional setup feature that will create the database where e-nspect stores its information. Before you select this option you must have an existing operational database server. (for example, you must have already run e-nspectDB.exe to install the MS Desktop SQL server). To reiterate, you must know which SQL Server you are going to use and the username and password for an account that can create databases. If you do not wish to use this method of creating the e-nspect database it can be created using the client tools. (See next page)

Creating the e-nspect database using the client tools



The above illustrates creating the e-nspect database on the database server called Mail1.

Quick start - Scenarios

A Single Exchange Server

You have only a single machine running Exchange 2000 Server.

1. Run e-nspectDB.exe to install the MS SQL Desktop Engine.
2. Run the e-nspect setup program and select all the components

An Exchange Server and an Admin Workstation

You have one machine running Exchange 2000 server and a Windows XP admin. Workstation.

1. Run e-nspectDB.exe on the admin workstation to install the MS SQL Desktop Engine.
2. Run the e-nspect setup program on the admin workstation and select to install the following components:
 - Client Tools
 - Database Components
 - Create the e-nspect Database
3. Run the e-nspect setup program on the Exchange server and select to install the following:
 - Client Tools
 - Exchange Server Components

An Exchange Server, an Existing SQL Server and an Admin workstation.

You have one machine running Exchange 2000, another machine running SQL 2000 and another workstation running Windows XP.

1. Run the e-nspect setup program on the SQL server and choose the following:
 - Database Components
 - Create the e-nspect Database
2. Run the e-nspect setup program on the Exchange server and choose the following:
 - Exchange Server Components
3. Run the e-nspect setup program on the admin workstation and choose the following:
 - Client Tools

Quick start - Installing e-nspect2000

Do you have a SQL7 or SQL2000 server available?



On your Exchange 2000 server Execute e-nspect2k.exe to install e-nspect2000



Select the installation folder



Select the desired components.



When prompted, supply the database server name



When prompted, supply the database server username (sa if e-nspectDB was used)



When prompted, supply the database server user's password (this is e-nspect if E-nspectBD was used)



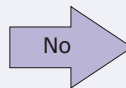
When prompted, supply the location where e-nspect2000 will keep its temporary files.



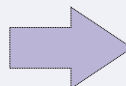
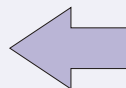
Installation is now finished.



Post Installation - Initially the e-nspect2K service has to be started manually. However, upon subsequent reboots this will be done automatically.



On the machine that you want as your database server execute e-nspectDB.exe to install SQL2000 (Sp3) Desktop Edition



Client Tools - These are MMC snap-ins used to view reports and undertake configuration tasks.

It is recommended to install these

Exchange Server Components - These are required to capture and process data.

Install these on the Exchange 2000 server.

E-nspect Database - This component will create an e-nspect database on your database server.

This is an optional component. An e-nspect database can also be created at a later time using the report viewer.

Database Components - These are required components and have to be installed on the machine running the MS SQL Server.

e-nspect2000 Readme

System Requirements:

Exchange 2000 Server
SQL7 or SQL2000 Server (MSDE 2000 Sp3 supplied)
MDAC 2.6 or higher

FAQ:

Q.How can I tell what MDAC version I have installed?

A.Microsoft can help here. Take a look at Q301202 in their knowledge base. This link may still be valid
<http://support.microsoft.com/default.aspx?scid=KB;EN-US;Q301202&>